



# Planetary Protection for CubeSat Missions 25 Sept. 2017

C. A. Conley, Ph.D.  
Planetary Protection Officer  
NASA Headquarters

# Planetary Protection in a Nutshell...



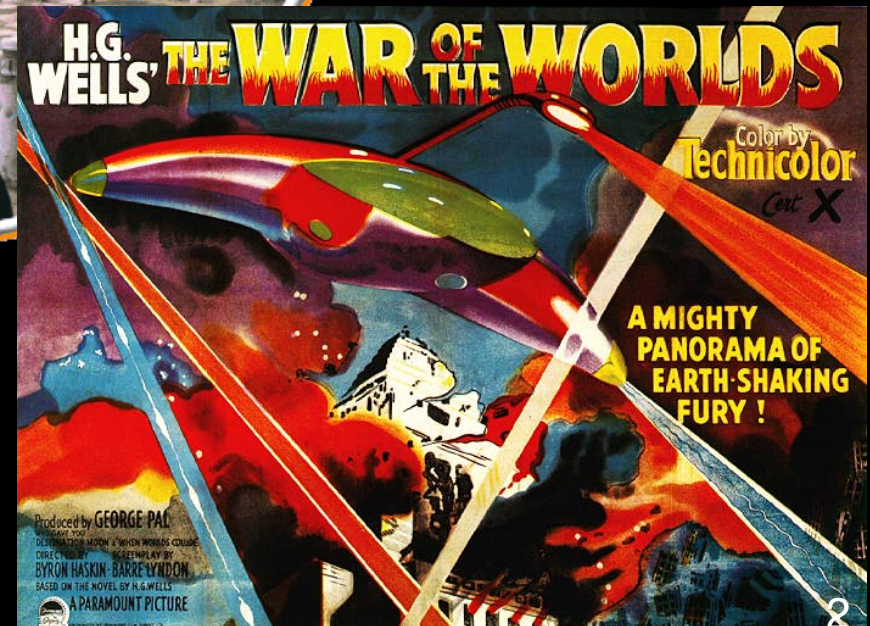
**H.G. Wells**  
1898

And scattered about...  
were the Martians—dead!  
—slain by the putrefactive  
and disease bacteria against  
which their systems were unpre-  
pared; slain as the red weed was  
being slain; slain, after all man's devices  
had failed, by the humblest things that God,  
in his wisdom, has put upon this earth.

...By virtue of this natural selection of our kind  
we have developed resisting power; to no  
germs do we succumb without a struggle...



**Orson Welles**  
1938





# Planetary Protection Policy

(from NPD 8020.7; near-verbatim from COSPAR)



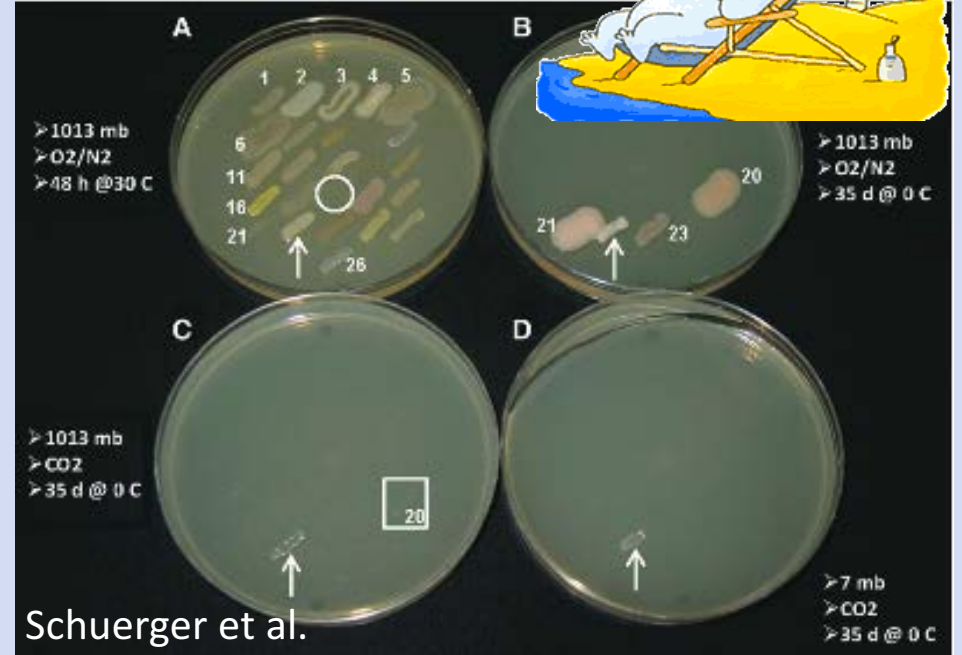
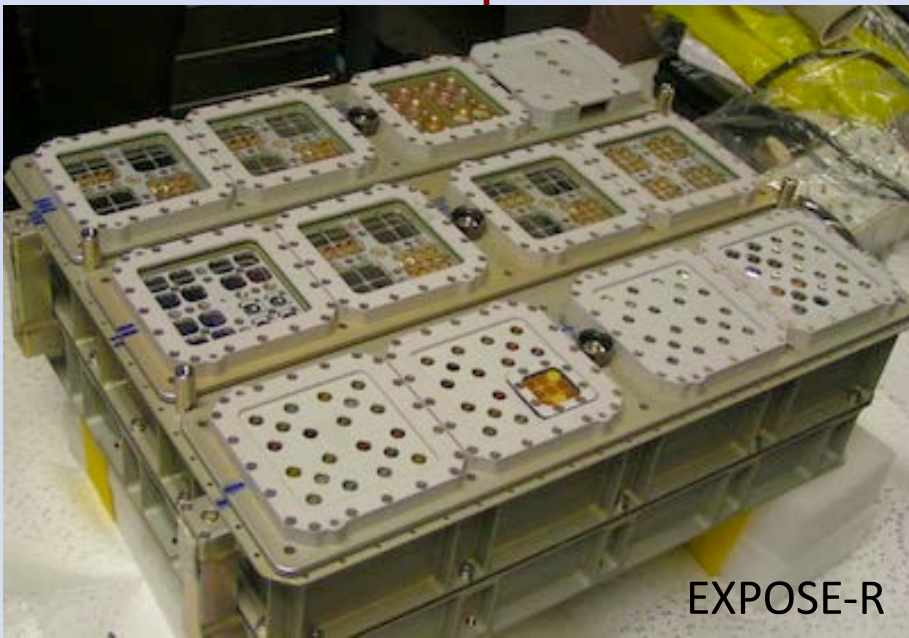
- “The conduct of scientific investigations of possible extraterrestrial life forms, precursors, and remnants must not be jeopardized.”
  - Preserves science opportunities directly related to NASA’s goals, and can support certain ethical considerations; originally recommended to NASA by the NAS in 1958
  - Preserves our investment in space exploration
  - Can preserve future habitability options
- “The Earth must be protected from the potential hazard posed by extraterrestrial matter carried by a spacecraft returning from another planet.”
  - Preserves Earth’s biosphere, upon which we all depend...
- Assignment of categories for each specific mission/body is to “take into account current scientific knowledge” via recommendations from advisory groups, “most notably the Space Studies Board.”



# Earth Microbes are Surprisingly Capable...



Cleanroom isolates can survive for years on the outside of the International Space Station

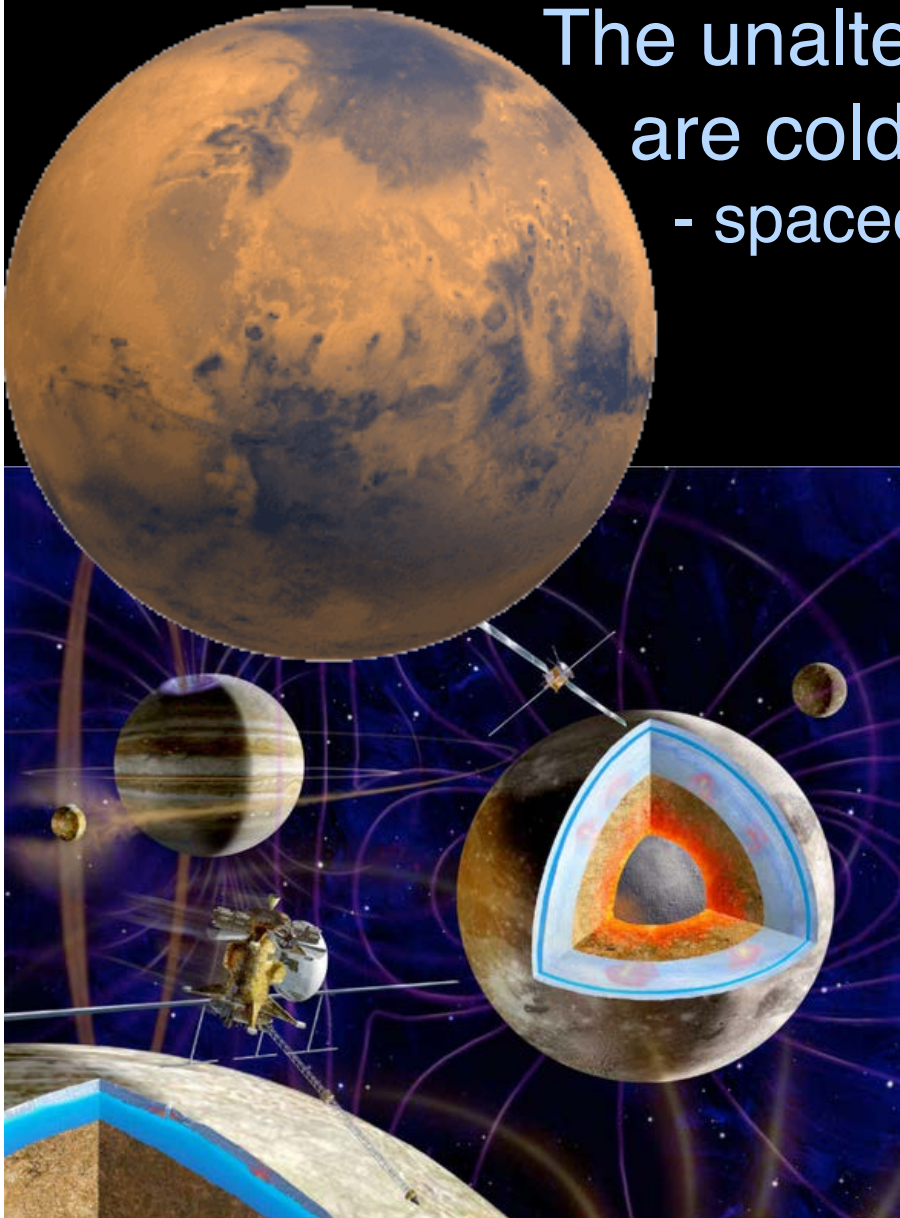


Microbes common on cheese can grow in a Mars chamber

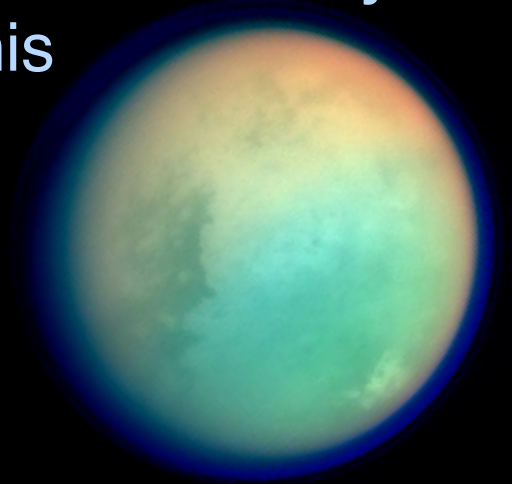
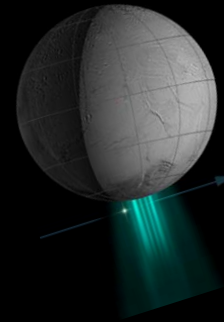
These observations were not made when planetary protection constraints were proposed in the 1960s: thoughtful precautions are key to protecting science and other future human activities in space.

# Planetary Environments are Diverse

The unaltered surfaces of most planets are cold, and by being cold, are dry  
- spacecraft can change this



Artist: Michael Carroll



Interior environments may be more similar to Earth:

- possible subsurface oceans, both hot and cold
- subsurface rock, similar(?) to inhabited Earth rocks



# Planetary Protection: What, Us Worry?

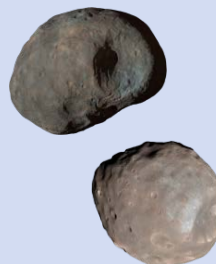


- Avoid contaminating target bodies that could host Earth life (e.g., Mars, Europa, Enceladus)
- Ensure biohazard containment of samples returned to Earth from bodies that could support native life (e.g., Mars and possibly moons, Europa, Enceladus)
- On human missions, characterize and monitor human health status and microbial populations (flight system microbiome) over the mission time, to support recognition of alterations caused by exposure to planetary materials



Earth's Moon,  
Most Solar System  
Bodies

Documentation only;  
No Operational  
Constraints on *in situ*  
activities or sample  
return



Phobos/Deimos

Document *in situ*  
activities;  
Possible return  
constraints



Mars, Europa, Enceladus

Documentation and  
operational restrictions to  
avoid introducing Earth life;  
Strict biohazard  
containment of returned  
samples



# Protecting Diverse Objectives at Mars



Can be consistent with scientific interests, but with more Earth contamination it becomes more difficult to detect Mars life...



Robotic  
Exploration

Early Human  
Exploration

Future  
Use



*We Are Here...*



**Phased Approach:** Be careful early; tailor later constraints to exploration or other goals, using knowledge gained on previous missions

- Humans have many interests at Mars; understanding potential hazards supports all of them
- Searching for Mars life or biohazards becomes more difficult because Earth contamination can overprint biosignatures and reduce signal-to-noise ratios
- Future colonization could be challenged, if unwanted Earth invasive species are introduced
  - Blocking aquifers
  - Consuming resources
  - Interfering with planned introductions

NASA Policy Instruction in place:  
Human mission requirements under  
development by HEO and SMD

# The Basic Rationale for Planetary Protection Precautions

(as written by Bart Simpson, Dec. 17, 2000, “Skinner’s Sense of Snow”)



Science class should not end in  
tragedy...

Science class should not end in  
tragedy...

Science class should not end in  
tragedy...

Science class should not end in  
tragedy...

Science class should not